

HILLIER, Holmes $\pi @ 30A$ (Trouble) 4-02-84

STA. O/R Cuck Rdg. near

31B O 0° 00' 10" 14.5"

(002) R 180° 00' 19" 14.5"



O 181° 05' 03" 07"

R 01° 05' 11" 07"

m = 181° 04' 52.5"

31B O 90° 05' 31" 34.5"

(002) R 270° 05' 38" 34.5"



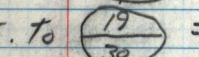
O 271° 10' 21" 26"

R 91° 10' 31" 26"

m = 181° 04' 51.5" \neq 181° 04' 52"

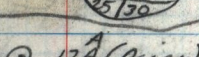
Hor. Dist. to 31B (002) = 2,514.32'

Hor. Dist. to = 2,706.10'



Hor. Dist. to = 2,627.34'

Hor. Dist. to 30B (Bank) = 1,266.84'



Hor. Dist. to = 2,627.30'

Hor. Dist. to = 1,266.86'

Hor. Dist. to = 1,480.36'

$\pi @ 17A$ (Dairy) 4-03-84

O 0° 00' 11" 10.5"

R 180° 00' 10" 10.5"

17A O 162° 05' 49" 48.5"

(Dairy) R 342° 05' 48" 48.5"

m = 162° 05' 38"

O 90° 05' 39" 38.5"

R 270° 05' 38" 38.5"

17A O 252° 11' 17" 18.5"

R 72° 11' 20" 18.5"

m = 162° 05' 40" \neq 162° 05' 39"